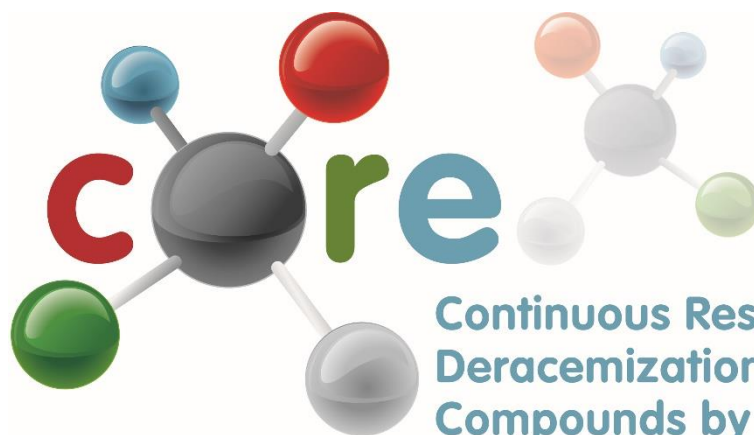


**H2020 Marie Skłodowska-Curie
Innovative Training Network
CORE www.coreitn.eu**

**Workshop 2018 / Mid-term review/
BIWIC Conference**

University of Rouen, Monday 3 – Friday 7 September 2018
[[Google map](#)]



Continuous Resolution and
Deracemization of Chiral
Compounds by Crystallization

Contents

1	Welcome	3
	About the network.....	3
2	Overview of the training programme.....	4
	Research Work Packages.....	4
	ESR Projects.....	6
	Management Involvement	7
	Academic & Industrial Secondment	8
	The Workshop 2018	9
3	Programme	10
	Appendix 1 – Workshop Participants	16
	Appendix 2 – Gantt Chart	17
	Appendix 3 – Practical Information.....	18
	Venues.....	19
	Using the wireless network as a visitor to Rouen	19
	Transport.....	19
	Social Programme.....	21
	Rouen	21
	Climate and weather.....	21
	Electricity.....	21
	Emergency numbers.....	21
	Medical services	21
	Telephone.....	22
	Time Zone.....	22
	Tipping.....	22
	Tourist information	22
	Appendix 4 – Rouen Map.....	23
	Appendix 5 - Contact Details.....	24

1 Welcome

About the network

Industries are in need of highly skilled academically trained experts and powerful sets of tools enabling the design, control & prediction of optimized & efficient production process of future high-value products such as chiral pharmaceuticals. The CORE Network will in parallel train 15 ESRs and develop tools, approaches and methods within the area of Continuous Resolution (CORE), the process to obtain enantiopure molecules of chiral compounds.

CORE brings together 8 beneficiaries, 6 associate partners and 2 external experts across 7 European countries resulting in an unparalleled combination of chirality, synthesis and crystallization training and research covering the areas of Chemical Engineering, Chemistry and Applied Physics.

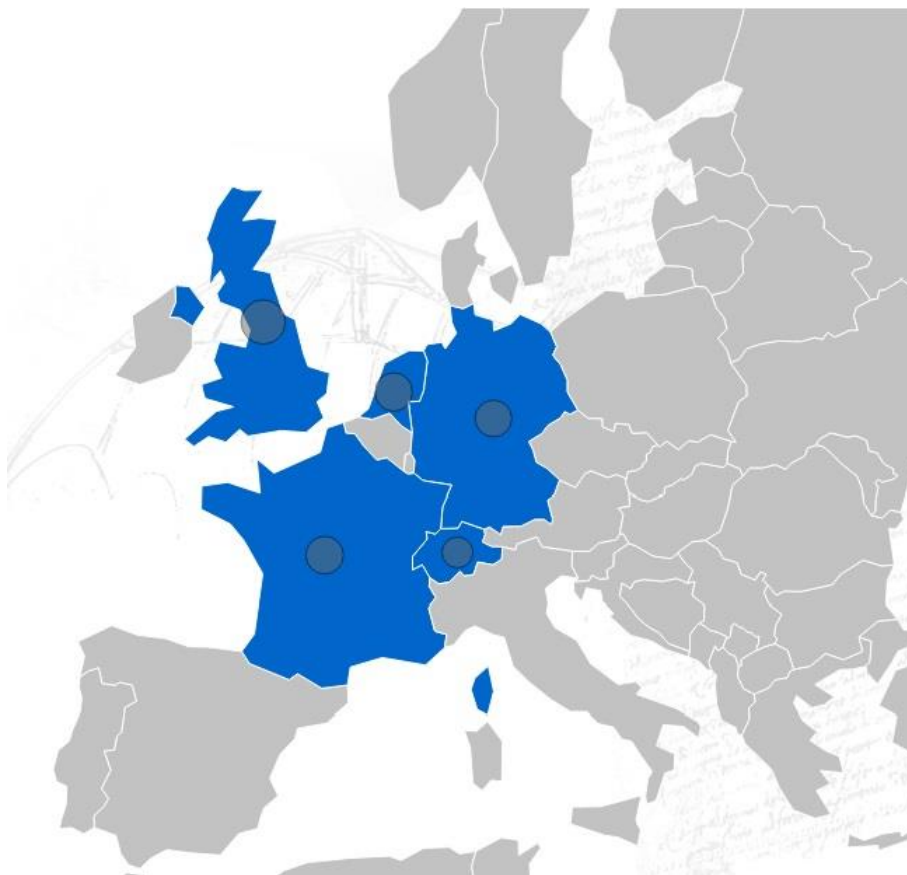


Figure 1: Beneficiary partner countries

This booklet will give you an overview of the CORE training network, and the second CORE workshop event being hosted by Beneficiary partner, SMS laboratory “Sciences et Méthodes Séparatives », University of Rouen (France) and Associate partner, PCAS and provide an overview on helpful practical information for the organisation of your stay in Rouen.

2 Overview of the training programme

This event will be the fifth/sixth of ten network wide event, which are the main meeting events of our Innovative Training Network. Before getting into programme details it might be helpful to give you a brief reminder of the key elements of the training and research programme.

	Main Training Events & Conferences	EC	Location/Lead	Date	M	Complete
1	Introductory event	2	University of Strathclyde, UK	30 January - 2 February 2017	4	Y
2	Summer School Crystallization	2	Radboud University, Netherlands	3-7 July 2017	8	Y
3	Workshop on Solid State Properties	2	TeraCrystal, Romania	6-10 November 2017	14	Y
4	Summerschool Process Analytical Tools	2	University of Manchester, UK	16 - 20 April 2018	19	Y
5	Workshop Resolution Fundamentals and Mid-term Review Meeting	2	University of Rouen, France	3 - 5 September 2018	24	Y
6	Conference Chirality & Resolution (BIWIC 2018 - 25th International Workshop on Industrial Crystallization)		University of Rouen, France	6 - 7 September 2018	24	Y
7	Workshop Chiral Synthesis	2	SYNCOM, Groningen, Netherlands	20-24 May 2019 (dates tbc)	32	
8	Summerschool Continuous Resolution (with the International Max Planck Research School Magdeburg for Advanced Methods in Process and Systems Engineering)	2	OVGU/MPI, Magdeburg, Germany	26 – 30 August 2019	35	
9	Final Workshop*		FAU, Erlangen, Germany	November 2019 (dates tbc)	38	
10	ISIC Conference – CORE Session on Chirality & Resolution		USTRATH - ISIC, Potsdam near Berlin, Germany	8 – 11 September 2020	48	

* Additional event for ESRs to present their final work within the network.

Figure 2: Key elements of the training and research programme

The training objective of the CORE network is to deliver a CORE skills toolbox of knowledge, personal, organizational and impact skills to a core of multi-disciplinary scientists and engineers in the interdisciplinary and cross-sectional field of Continuous Resolution. Each ESR obtains dedicated training through their research project, network events, a webinar course, management involvement and an academic & industrial secondment.

Research Work Packages

The research objective of the CORE Network is to jointly construct a CORE Industrial Toolbox on Continuous Resolution that provides next generation tools, approaches and methods to industry for the development continuous resolution processes. The strongly involved industrial partners will ensure that the CORE Industrial Toolbox fulfils their requirements in the skills gap areas Towards Continuous, Hybrid Resolution and Enabling Resolution.

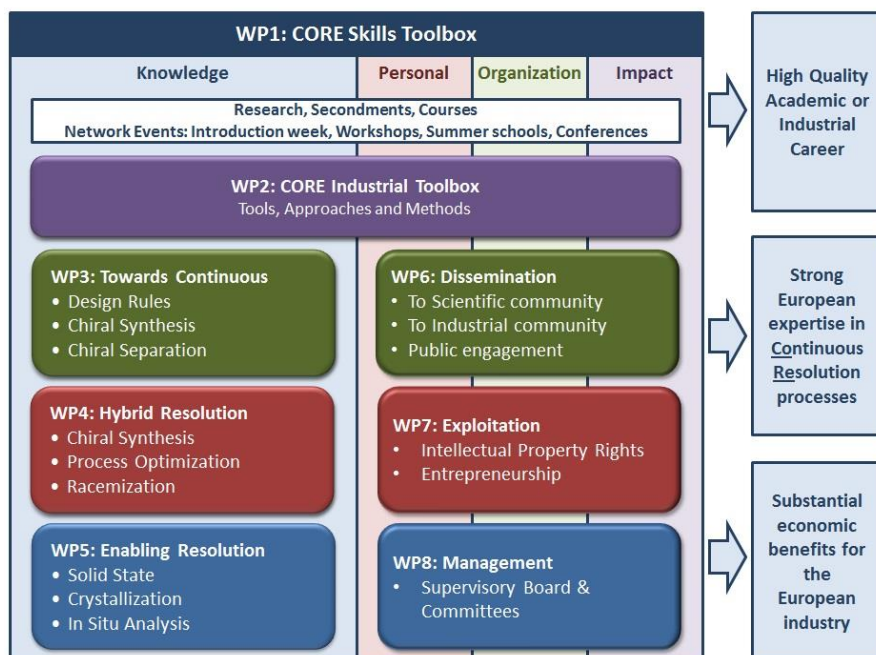


Figure 3: Each ESR will develop, validate and deliver a tool, approach or method within WP3-5 to be integrated in the CORE Industrial Toolbox (WP2), see [Figure 4](#) for the relation between WP and individual ESR projects. Through WP2 the ESRs will be trained to work in an international multidisciplinary team on a joint target where the synergy between the ESRs will be responsible for an intensified training in both knowledge and transferable skills. Expertise areas that will be covered by the network are: Continuous Manufacturing, Chiral Resolution, Chiral Synthesis, Crystallization Fundamentals, Process Analytical Tools and Process Modelling & Design.

ESR Projects

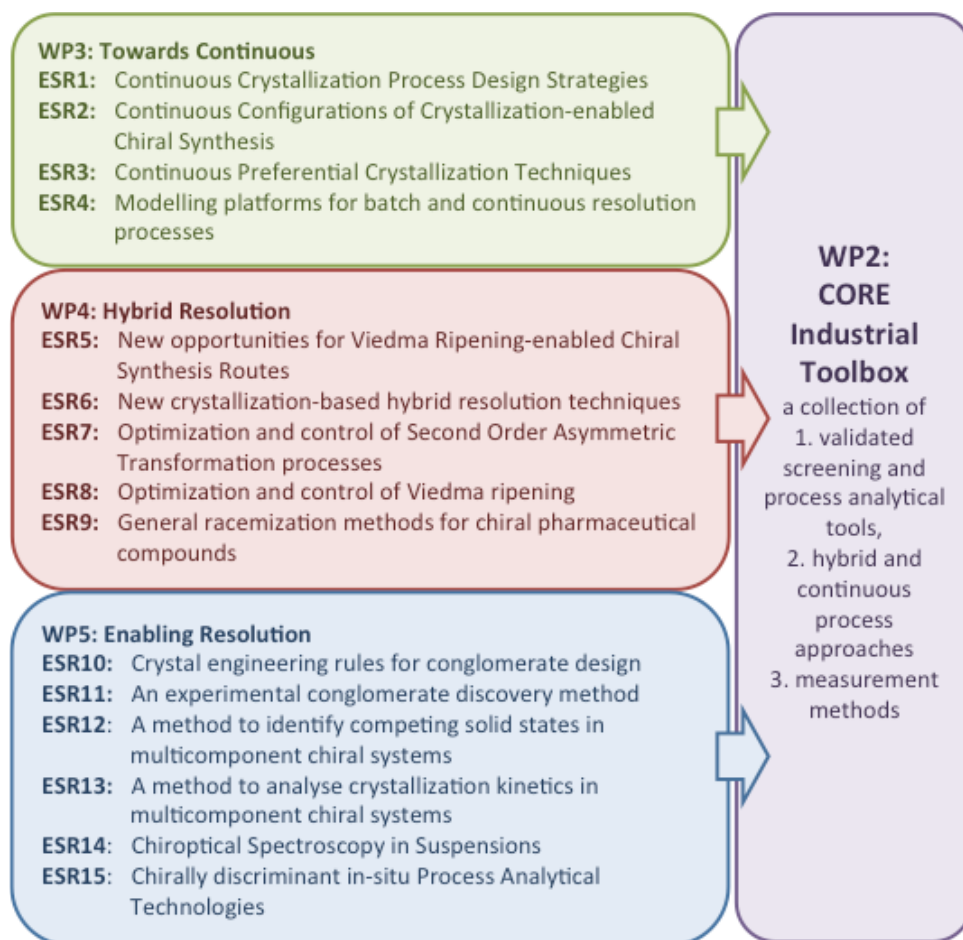


Figure 4: Relationship between WP and individual ESR projects

Management Involvement

Each ESR will be a member of the Training Committee, CORE Industrial Toolbox Committee, Dissemination Committee, Exploitation Committee or the Supervisory Board. In each of these committees 3 ESRs will be positioned. This will help the ESRs to develop management and organization skills while developing detailed strategies on e.g., dissemination.

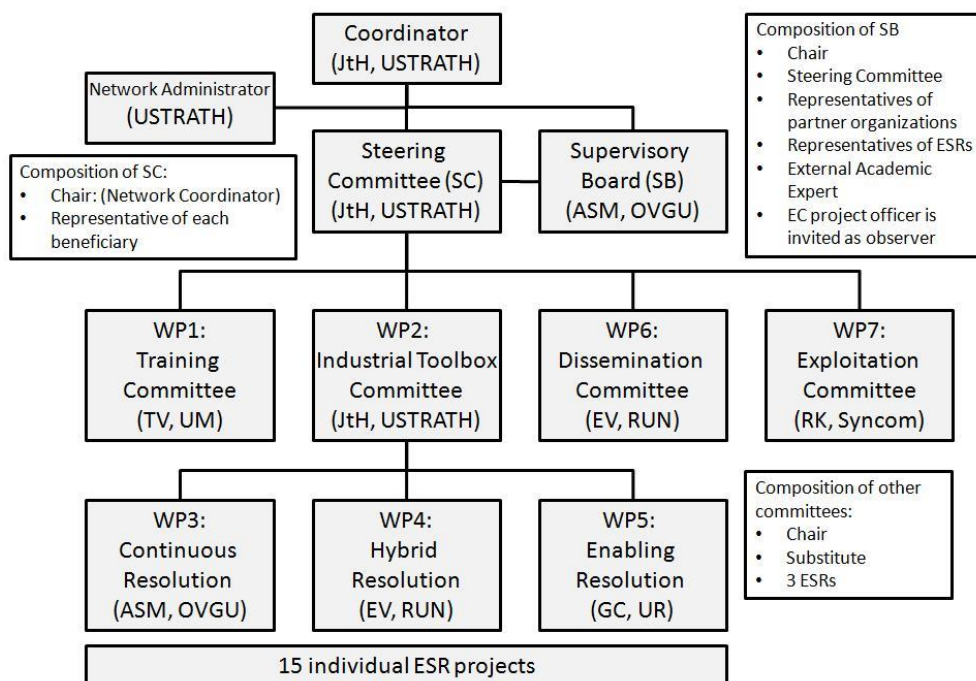


Figure 5: CORE management structure

ESR No	ESR Name	Host
Supervisory Board (Chair: Prof Andreas Andreas Seidel-Morgenstern)		
2	Johannes Hoffmann	USTRATH
8	Francesca Breveglieri	ETH
9	Carola Tortora	UEN
WP1: Training Committee (Chair: Thomas Vetter, Deputy Chair: Prof Joop ter Horst)		
3	Francesca Cascella	OVGU
12	Lina Harfouche	UR
15	Gufghan ur Rehman	UM
WP2: Industrial Toolbox (Chair: Prof Joop ter Horst, Deputy Chair: Prof Andreas Seidel-Morgenstern)		
1	Shashank Bhandari	OVGU
7	Ryusei Oketani	UR
10	Jan Joris Devogelaer	RU
WP6: Dissemination Committee (Chair: Prof Elias Vlieg, Deputy Chair: Prof Svetlana Tsogoeva)		
5	Giuseppe Belletti	RU
11	Aliou Mbodji	UR
14	Raghunath Venkatramanan	USTRATH
WP7: Exploitation Committee (Chair: Prof Richard Kellogg, Deputy Chair: Prof Joop ter Horst)		
4	Brigitta Bodak	ETH
6	Guilio Valenti	Syncom
13	Maxime Charpentier	USTRATH

Figure 6: ESR allocation to CORE committees

Academic & Industrial Secondment

All ESRs visits/secondments are planned at the secondary supervisor institute, at an academic partner as well as at an industrial partner. Additional minor secondments at other academic or industrial partners may be arranged for ESRs to acquire additional specific skills to be added to the CORE Skills Toolbox ([see Gantt Chart](#)).

The ESR define a short research project in cooperation with the primary and secondary supervisor to perform during the secondary supervisor visit. The second supervisor will thus provide complementary expertise and, if beneficial, can also provide access to additional equipment, analysis techniques and transferable skills training.

The academic partners host the **academic secondments**. The ESR in cooperation with the academic secondment supervisor and the primary supervisor define the academic research project to be performed during the 3-5 month academic secondment. The secondment at the academic partner is targeting a specific skill needed to develop the tool, approach or method for the CORE Toolbox. The aim of the visit is to come to a joint scientific paper on the defined project.

The industrial participants host and supervise the **industrial secondments**. The ESR in cooperation with the industrial secondment supervisor and the primary supervisor define the industrial project to be performed during the 3-5 month industrial secondment. The secondment at the industrial partner is targeting the viability of the developed tool, approach or method for the CORE Toolbox.

The Workshop 2018

This CORE workshop 2018 is the second of three CORE workshops which are for the CORE network participants only. The first two days, Monday 3 and Tuesday 4 September are dedicated to the CORE network activities. On Wednesday 5 September, the project Mid-term review will take place with the European Commission.

The workshop will be followed by the BIWIC2018 25th International Workshop on Industrial Crystallization Conference <https://labsms.univ-rouen.fr/en/content/biwic2018> on Thursday 6 and Friday 7 September 2018, please ensure that you have completed the online registration/payment to attend this event.

All Early Stage Researchers (ESRs) and their supervisors, together with representatives of the associate partner organisations, external experts, and the project manager are invited to attend the workshop to discuss the CORE project.

The full programme is outlined on the following pages.

3 Programme

Workshop Resolution Fundamentals/ Mid-term review, 3-5 September 2018
BIWIC Conference, 6-7 September 2018

Monday 3 September 2018 – hosted by SMS (Maison de l'Université)

The presentations will take place in "Salle de Conference" Maison de l'Université Ground Floor
The meetings will take place either in "Salle divisible Nord" or "Salle divisible Sud" also located at Maison de l'Université Ground Floor

08:30-08:45	Registration and Coffee
08:45-09:00	Welcome (Prof Gerard Coquerel – UR)
	Introduction to the second workshop (Prof Joop Ter Horst - USTRATH)
09:00-09:45	Toolbox Introduction – model compounds and toolbox ESRs
09:45-11:00	<u>Core toolbox presentations by WP5 ESRs x 3 (20mn + 5mn questions)</u> <ul style="list-style-type: none">• ESR10: Jan-Joris Devogelaer, Radboud University Nijmegen, Netherlands (RUN)• ESR11: Aliou Mbodji, University of Rouen, France (UR)• ESR12: Lina Harfouche, University of Rouen, France (UR)
11:00-11:20	Break
11:20-12:40	<u>Core toolbox presentations by WP5 ESRs x 3 (20mn + 5mn questions)</u> <ul style="list-style-type: none">• ESR13: Maxime Charpentier, University of Strathclyde, Glasgow, UK (USTRATH)• ESR14: Raghunath Venkatramanan, University of Strathclyde, Glasgow, UK (USTRATH)• ESR15: Ghufuran ur Rehman, University of Manchester, UK (UM)
12:40-13:40	Lunch
13:40-15:20	<u>Core toolbox presentations by WP3 ESRs x 4 (20mn + 5mn questions)</u> <ul style="list-style-type: none">• ESR1: Shashank Bhandari, Otto-von-Guericke University Magdeburg, Germany (OVGU)• ESR2: Johannes Hoffmann, University of Strathclyde, Scotland UK (USTRATH)• ESR3: Francesca Cascella, Otto-von-Guericke University Magdeburg, Germany (OVGU)• ESR4: Brigitta Bodak, ETH Zurich (Swiss Federal Institute of Technology in Zurich), Switzerland (ETH)
15:20-15:35	Break
15:35-16:20	<u>In parallel:</u> Industrial Toolbox meetings (WP 3, 4, 5)
16:25-17:10	<u>In parallel:</u> Subcommittee meetings (WP 1, 2, 7, 8)
17:45	Short Guided Tour of the City of Rouen http://www.rouentourisme.com/guided-tours-agenda/ Meeting point : Office de Tourisme, 25 Place de la Cathédrale, Rouen (in front of The Cathedral in the town Center) Bus tickets will be provided to travel from Maison de l'Université to the Town Centre.

Tuesday 4 September 2018 – hosted by PCAS

08:30-10:00	Bus to PCAS, Porcheville - The meeting point is 56 QUAI GASTON BOULET, Rouen (in front of the IBIS hotel) at 8H30
10:00-10:15	Arrival at PCAS and Welcome
10:15-12:20	<u>Core toolbox presentations by WP4 ESRs x 5 (20mn + 5mn questions)</u> <ul style="list-style-type: none">• ESR5: Giuseppe Belletti, Radboud University Nijmegen, Netherlands (RUN)• ESR6: Giulio Valenti, SYNCOM, The Netherlands• ESR7: Ryusei Oketani, University of Rouen, France (UR)• ESR8: Francesca Breveglieri, ETH Zurich (Swiss Federal Institute of Technology in Zurich), Switzerland (ETH)

	<ul style="list-style-type: none"> • ESR9: Carola Tortora, Friedrich - Alexander University Erlangen - Nürnberg, Germany (FAU)
12:20-13:45	<u>In Parallel:</u> <ul style="list-style-type: none"> • Working Lunch - Supervisory Board (SB) • Non SB ESRs lunch (12)
13:45-14:45	Toolbox summary and discussion
14:45-16:45	Visit of PCAS by ESRs and attendees
17:00-18:30	Bus returns from PCAS
18:30	Arrival in Rouen
19:30	CORE Network/MTR Dinner in the Center of Rouen – Le Bistrot d'Arthur

Wednesday 5 September 2018 – hosted by SMS (Maison de l'Université)

The presentations and meeting will take place in "Salle de Conference" Maison de l'Université Ground Floor

08:30-09:30	Steering committee meeting (For beneficiary partners only)
10:00-10:05	Welcome
10:05-10:10	Introduction by Research Executive Agency Representative (Ioanna Peppas, Project Officer) and Scientific Expert (Prof Reko Leino, Åbo Akademi University)
10:10-10:20	Tour de table: All scientists-in-charge briefly present their research team and describe their role within the network: <ul style="list-style-type: none"> • University of Strathclyde (USTRATH) Scientist in Charge: Professor Joop ter Horst (Project Coordinator) • Otto-von-Guericke University Magdeburg, Germany (OVGU) Scientist in Charge: Professor Andreas Seidel-Morgenstern • University of Rouen, France (UR) Scientist in Charge: Professor Gerard Coquerel • Radboud University Nijmegen, Netherlands (RUN) Scientist in Charge: Professor Elias Vlieg • ETH Zurich (Swiss Federal Institute of Technology in Zurich), Switzerland (ETH) Scientist in Charge: Professor Marco Mazzotti • University of Manchester, UK (UM) Scientist in Charge: Dr Thomas Vetter • Friedrich - Alexander University Erlangen - Nürnberg, Germany (FAU) Scientist in Charge: Professor Svetlana B. Tsogoeva • SYNCOM, Netherlands Scientist in Charge: Professor Richard Kellogg
10:20-11:05	Coordinator's Report, Professor Joop ter Horst, University of Strathclyde, Scotland UK (USTRATH) <ul style="list-style-type: none"> • Scientific Basis and Progress of CORE ITN • Training Programme • Networking • Management
11:05-11:25	Break
11:25	Individual Reports from Early Stage Researchers The fellows should briefly present themselves, their background, and their training experiences within the Network (~10 minutes/fellow). Most importantly, the fellows should show the main objectives of their projects, methodology used and main results obtained so far (including reference to WP Industrial Toolbox). The end of the presentation should include the fellows' expectations on the possible impact of the action on their future career.
11:25	<u>Individual Reports from Early Stage Researchers in WP3: Towards Continuous</u> <ul style="list-style-type: none"> • ESR1: Shashank Bhandari, Otto-von-Guericke University Magdeburg, Germany (OVGU)

	<ul style="list-style-type: none">• ESR2: Johannes Hoffmann, University of Strathclyde, Scotland UK (USTRATH)• ESR3: Francesca Cascella, Otto-von-Guericke University Magdeburg, Germany (OVGU)• ESR4: Brigitta Bodak, ETH Zurich (Swiss Federal Institute of Technology in Zurich), Switzerland (ETH)
12:05	<u>Individual Reports from Early Stage Researchers in WP4: Hybrid Resolution</u> <ul style="list-style-type: none">• ESR5: Giuseppe Belletti, Radboud University Nijmegen, Netherlands (RUN)• ESR6: Giulio Valenti, SYNCOM, The Netherlands• ESR7: Ryusei Oketani, University of Rouen, France (UR)• ESR8: Francesca Breveglieri, ETH Zurich (Swiss Federal Institute of Technology in Zurich), Switzerland (ETH)• ESR9: Carola Tortora, Friedrich - Alexander University Erlangen - Nürnberg, Germany (FAU)
12:55	Lunch
14:05	<u>Individual Reports from Early Stage Researchers in WP5: Enabling Resolution</u> <ul style="list-style-type: none">• ESR10: Jan-Joris Devogelaer, Radboud University Nijmegen, Netherlands (RUN)• ESR11: Aliou Mbodji, University of Rouen, France (UR)• ESR12: Lina Harfouche, University of Rouen, France (UR)• ESR13: vacancy, University of Strathclyde, Glasgow, UK (USTRATH)• ESR14: Raghunath Venkatramanan, University of Strathclyde, Glasgow, UK (USTRATH)• ESR15: Ghufuran ur Rehman, University of Manchester, UK (UM)
15:05	Coffee break
15:20	Meeting between the MC fellows and the REA representative <p>Discussion with the Project Officer about their experiences within the Network in terms of training, progress and impact on their future careers.</p> <p>Main focus will be on:</p> <ul style="list-style-type: none">i) Administration: Grant Agreement awareness, European Charter and Code for Researchers, working conditions (employment contracts, eligible allowances, visa issues, administrative support), tuition fees. Supervision and integration: Quality of the supervision, integration within the research team/the network/the host institution/ the country.ii) Training: Effectiveness of the Career Development Plan, secondments, PhD courses, attendance to external courses/workshops/conferences, language courses and complementary skills training.iii) Scientific: Progress of projects, time schedule, achievements (publications/patents, etc.), acknowledgement of funding source.
16:00	Meeting between the Coordinator, representatives of the other beneficiaries/partner organisation and the REA representatives
16:20	Feedback and open discussion <p>Feedback from the REA Project Officer and the Expert Reviewer and discussion on the output of the Network so far, on possible training areas for future exploitation or the impact on the fellows' future careers development (~ between 30- 60 minutes).</p>
17:00	Close
18:30	BIWIC Conference Welcome Reception

BIWIC 2018 – Rouen 5-7 September 2018

Wednesday 5 September 2018 (Maison de l'Université)

18:30 Welcome reception BIWIC

Thursday 6 September 2018 (Maison de l'Université)

08:00-08:30 Registration desk opening
08:30-08:45 Welcome speech
08:45-10:15 Session 1
10:15-10:45 Coffee break-posters
10:45-12:15 Session 2
12:15-14:00 Lunch + poster
14:00-15:30 Session 3 (3 confs)
15:30-16:00 Closing speech
16:00 Football game
20:00 Gala dinner

Friday 7 September 2018 (Maison de l'Université)

08:30-10:00 Session 4
10:00-10:30 Coffee break Posters
10:30-12:00 Session 5
12:00-13:30 Lunch
13:30-15:00 Session 6
15:00 Closing of the conference

Crystal Growth competition

CORE Early Stage Researchers (ESRs) have organised a European crystal growth competition for high schools in the neighbourhood of the ESR host institutions. High school students have been invited to the host institute for an introduction about the CORE Project, MSCA, the scientific work in crystallization and a lab tour. The students have been provided with the materials and methods to grow Sodium Bromate crystals under safe conditions. Sufficient material are provided to make crystals large enough to use normal photography for a good impression. After their crystallization experiments a selection of high school students will be invited to analyse their crystals at the host institute under supervision. The crystal pictures are displayed on the CORE website <https://www.coreitn.eu/gallery.php?gallery=Crystal%20Growth> and also exhibited at the #BIWIC2018 Conference, 6-7 September 2018 in Rouen. Attendees will be asked to vote for the winning artistic and scientific picture. A time will be set at the end of the conference for the presentation of the winners.

Photographs from the visits are available at

https://www.facebook.com/pg/coreitn/photos/?tab=album&album_id=930718160439830

We are using the hashtag [#CORECrystalGrowth](#) on social media.

Participation: 5 countries, 7 high Schools, 60 students, [37 images](#)

- University of Rouen, France – 27 March, 13 April and final visit in May 2018 (18 students from Lycée Camille Saint-Saens, France)
- Radboud University, Nijmegen, The Netherlands – 17 May and 1 June 2018 (8 students from Canisius College, Mondial College and Ludger College, The Netherlands)
- University of Strathclyde, Glasgow, Scotland – 5 June 2018 (8 students from Springburn Academy, Glasgow UK)
- Otto-von-Guericke University Magdeburg, Germany – 11 June 2018 (7 student from Werner-von-Siemens-Gymnasium, Magdeburg, Germany)
- Friedrich - Alexander University Erlangen - Nürnberg, Germany – 21 June and 5 July 2018 (16-20 students from the Willstätter Gymnasium of Nürnberg, Germany).

Criteria

The Criteria for the competition was agreed as

- Most perfect / aesthetic
 - Most interesting / creative
-

Prize

All participants (high school students) will receive a certificate of participation. There will be three winning prizes in each category 1st, 2nd and 3rd. The winners will each receive a certificate, medal and a framed photo

Workshop Resolution Fundamentals (including Mid-term Review Meeting) and Conference Chirality & Resolution (BIWIC 2018 - 25th International Workshop on Industrial Crystallization)
University of Rouen, France, 3-7 September 2017

Time schedule

	CORE Workshop Resolution Fundamentals		Mid-term Review	BIWIC Conference			
	Mon 03 September 2017	Tue 04 September 2017	Wed 05 September 2017	Thu 06 September 2017	Fri 07 September 2017		
	hosted by SMS (Maison de l'Université)	hosted by PCAS	hosted by SMS (Maison de l'Université)	https://labsms.univ-rouen.fr/en/content/biwic2018			
08:30 - 08:45	Registration and Coffee	Bus to PCAS	Steering Committee (beneficiary partners)	Welcome Speech	Session 4		
08:45 - 09:00	Welcome			Session 1			
09:00 - 09:15	Toolbox Introduction - Model Compounds and Toolbox ESRs						
09:15 - 09:30							
09:30 - 09:45							
09:45 - 10:00	Core toolbox presentations by WP5 ESRs 10, 11 & 12 (20mn + 5mn questions)	Arrival at PCAS and Welcome	Welcome and Introductions	Coffee break - posters	Coffee break - posters		
10:00 - 10:15							
10:15 - 10:30		Core toolbox presentations by WP4 ESRs 5, 6, 7, 8 & 9 (20mn + 5mn questions)	Coordinator's Report		Coffee break - posters		
10:30 - 10:45							
10:45 - 11:00			Break	Session 2			
11:00 - 11:20	Break (Hall MDU)				Session 5		
11:20 - 11:30							
11:30 - 11:45		Core toolbox presentations by WP5 ESRs 13, 14 & 15 (20mn + 5mn questions)		ESR Presentations - WP3 and WP4		Lunch	
11:45 - 12:00							
12:00 - 12:20							
12:20 - 12:30	<u>In Parallel:</u> Working Lunch - Supervisory Board Lunch for non SB ESRs		Lunch - posters	Session 6			
12:30 - 12:40							
12:40 - 13:00							
13:00 - 13:15		Lunch	Session 3	Conference Close			
13:15 - 13:30							
13:30 - 13:40							
13:40 - 14:00	Core toolbox presentations by WP3 ESRs 1, 2, 3 & 4 (20mn + 5mn questions)		ESR Presentations - WP5	Closing Speech			
14:00 - 14:15							
14:15 - 14:30							
14:30 - 14:45		PCAS Tour for ESRs and attendees	Break	Football Game			
14:45 - 15:00							
15:00 - 15:20							
15:20 - 15:35	Meeting between Early Stage Researchers and Research Executive Agency Representative		Feedback and Open Session				
15:35 - 15:45							
15:45 - 16:00							
16:00 - 16:20		Meeting between beneficiaries/partners & REA					
16:25 - 16:30							
16:30 - 16:45							
16:45 - 17:00							
17:00 - 17:10	Feedback and Open Session						
17:15 - 17:30							
17:30 - 17:45							
17:45 - 18:00							
18:00 - 18:15							
18:15 - 18:30	Short Guided Tour of Rouen - 17:45	Bus to Rouen					
Evening					19:30 CORE Network MTR Dinner Le Bistro d'Arthur in the Center of Rouen	18:30: BIWIC Conference Welcome Reception	20:00 Gala Dinner

Table Key:

CORE Network
Toolbox
Mid-term Review
Social Activities
Dissemination

Appendix 1 – Workshop Participants

Category:	First Name:	Family Name:	Organisation:
EXT	Luc	Aerts	UCB Pharma
ESR	Giuseppe	Belletti	Radboud University Nijmegen
ESR	Shashank	Bhandari	Otto von Guericke University Magdeburg
ESR	Brigitta	Bodák	ETH Zurich
FP	Clément	Brandel	SMS Laboratory - University of Rouen Normandy
ESR	Francesca	Breveglieri	ETH Zurich
FP	Yohann	Cartigny	SMS Laboratory - University of Rouen Normandy
ESR	Francesca	Cascella	Otto von Guericke University Magdeburg
FP	Pascal	Cardinaël	SMS Laboratory - University of Rouen Normandy
ESR	Maxime	Charpentier	University of Strathclyde
FP	Gérard	Coquerel	SMS Laboratory - University of Rouen Normandy
ESR	Jan-Joris	Devogelaer	Radboud University
FP	Valérie	Dupray	SMS Laboratory - University of Rouen Normandy
FP	Gabin	Gbabode	SMS Laboratory - University of Rouen Normandy
ESR	Lina	Harfouche	SMS Laboratory - University of Rouen Normandy
ESR	Johannes	Hoffmann	University of Strathclyde
AP	Alex	Kalbasenka	Corbion
FP	Richard	Kellogg	syncom bv
REA	Reko	Leino	Research Executive Agency, European Commission (Åbo Akademi University)
EXT	Tom	Leyssens	UCL
AP	Coca	Iordache	TeraCrystal
AP	Heike	Lorenz	Max Planck Institute for Dynamics of Complex Technical Systems
AP	David	Maillard	Merck KGaA
FP	Marco	Mazzotti	ETH Zurich
ESR	Aliou	Mbodji	SMS Laboratory - University of Rouen Normandy
AP	Niall	Mitchell	Process Systems Enterprise (PSE)
ESR	Ryusei	Oketani	SMS Laboratory - University of Rouen Normandy
REA	Ioanna	Peppa	Research Executive Agency, European Commission
AP	Mihaela	Pop	TeraCrystal
ESR	Ghufran ur	Rehmabn	University of Manchester
FP	Claire	Scott	University of Strathclyde
FP	Andreas	Seidel-Morgenstern	Otto von Guericke University Magdeburg
FP	Joop	ter Horst	University of Strathclyde
ESR	Carola	Tortora	FAU Germany
FP	Svetlana	Tsogoeva	FAU Germany
ESR	Giulio	Valenti	SYNCOM BV
ESR	Raghunath	Venkatramanan	University of Strathclyde
FP	Thomas	Vetter	University of Manchester
FP	Elias	Vlieg	Radboud University Nijmegen

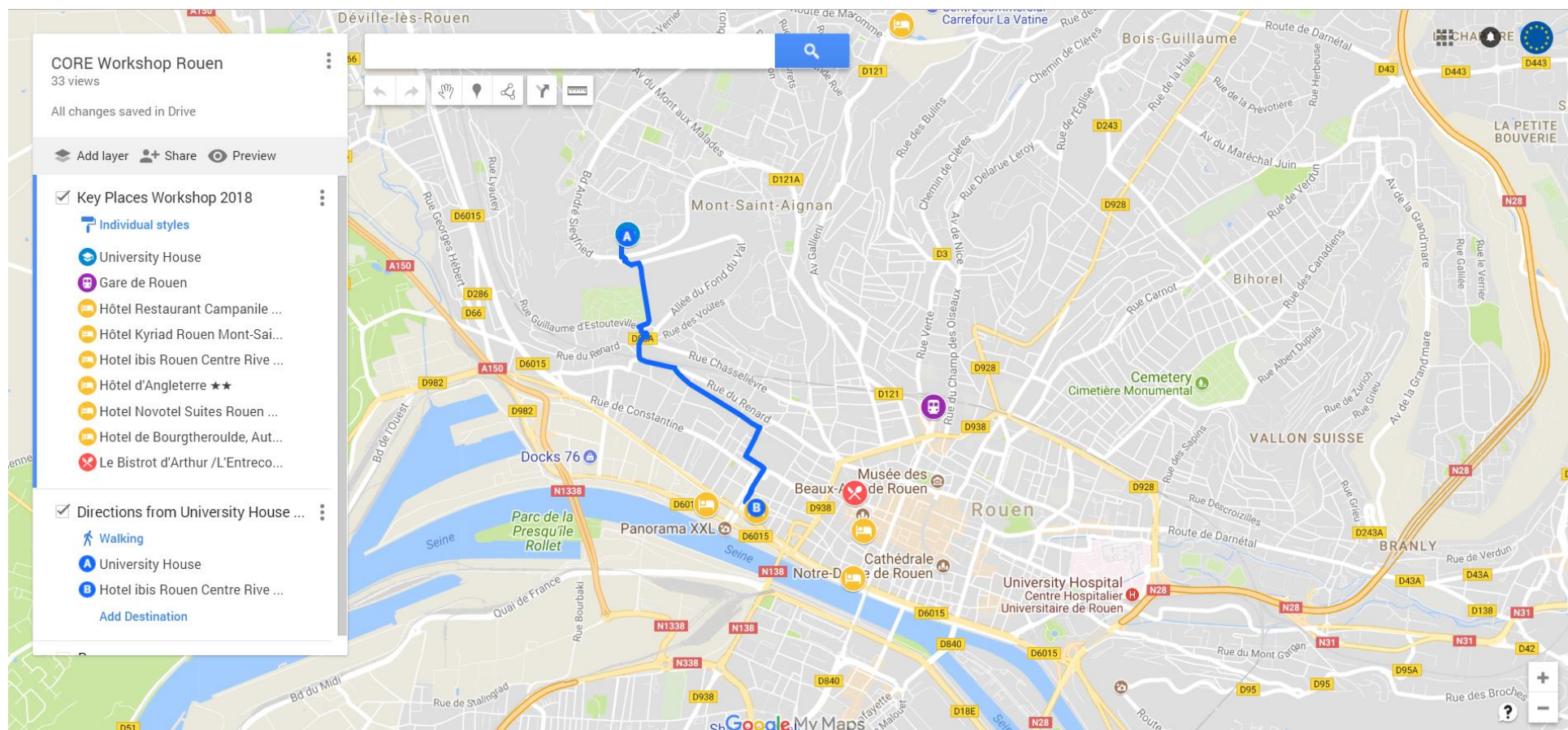
Category Key: AP – Associate Partner, ESR – Early Stage Researcher, EXT – External, FP – Full Partner (Beneficiary), REA – Research Executive Agency, European Commission

Appendix 2 – Gantt Chart

K: Kick-off meeting, E: End of project meeting, TC: Telephone Conference, M: Midterm report ESRs, MT: Midterm report on CORE Industrial Toolbox, F: ESR final tool article, FT: Final review article on CORE Industrial Toolbox, C: Skills Portfolio Certified, A: SB Agenda, M: SB Minutes, G: Midterm conference high school crystal picture competition, X: European Researchers' Night/Explorathon, P: Plan for dissemination, public engagement, exploitation. e: Evaluation/adjustment of plan/PDP.

		2016			2017												2018															2019												2020																																																																																																																																																																																																																																																																																																																																																																																																																																																																																								
		O	N	D	J	F	M	A	M	J	J	A	S	O	N	D	J	F	M	A	M	J	J	A	S	O	N	D	J	F	M	A	M	J	J	A	S	O	N	D	J	F	M	A	M	J	J	A	S																																																																																																																																																																																																																																																																																																																																																																																																																																																																																			
	Months	1	2	3	4	5	6	7	8	9	10	11	12	13	14	15	16	17	18	19	20	21	22	23	24	25	26	27	28	29	30	31	32	33	34	35	36	37	38	39	40	41	42	43	44	45	46	47	48																																																																																																																																																																																																																																																																																																																																																																																																																																																																																			
Researcher Recruitment	ESR1 Shashank Bhandari OVGU													ETH													USTRATH				PCAS PSE																																																																																																																																																																																																																																																																																																																																																																																																																																																																																																					
	ESR2 Johannes Hoffmann USTRATH														OVGU						RUN										SYNCOM																																																																																																																																																																																																																																																																																																																																																																																																																																																																																																					
	ESR3 Francesca Cascella OVGU																			UR							ETH				MERCK PCAS																																																																																																																																																																																																																																																																																																																																																																																																																																																																																																					
	ESR4 Brigitta Bodák ETH																								OVGU	MPI				CORBION																																																																																																																																																																																																																																																																																																																																																																																																																																																																																																						
	ESR5 Giuseppe Belletti RUN												UST									FAU									TC																																																																																																																																																																																																																																																																																																																																																																																																																																																																																																					
	ESR6 Giulio Valenti SYNCOM												UST										UR					ETH																																																																																																																																																																																																																																																																																																																																																																																																																																																																																																								
	ESR7 Ryusei Oketani UR													ETH													RUN				MERCK																																																																																																																																																																																																																																																																																																																																																																																																																																																																																																					
	ESR8 Francesca Breveglieri ETH																UM UR											UM			SYNCOM																																																																																																																																																																																																																																																																																																																																																																																																																																																																																																					
	ESR9 Carola Tortora FAU																		RUN									UM							CC MERCK																																																																																																																																																																																																																																																																																																																																																																																																																																																																																																	
	ESR10 Jan Joris Devogelaer RUN															UR							MPI						UM			PCAS																																																																																																																																																																																																																																																																																																																																																																																																																																																																																																				
	ESR11 Aliou Mbodji UR													RUN													UM				TC																																																																																																																																																																																																																																																																																																																																																																																																																																																																																																					
	ESR12 Lina Harfouche UR												UST								OVGU											PSE																																																																																																																																																																																																																																																																																																																																																																																																																																																																																																				
	ESR13 Maxime Charpentier USTRATH																												UR			PSE																																																																																																																																																																																																																																																																																																																																																																																																																																																																																																				
	ESR14 Raghu Venkatramanan USTRATH																	UR									OVGU					CORBION																																																																																																																																																																																																																																																																																																																																																																																																																																																																																																				
	ESR15 Ghufan ur Rehman UM																					MPI													ETH		CC MERCK																																																																																																																																																																																																																																																																																																																																																																																																																																																																																															
Training	Intro I/ Workshop 1-3				I										1										2										3																																																																																																																																																																																																																																																																																																																																																																																																																																																																																																	
	Summerschool										1									2												3																																																																																																																																																																																																																																																																																																																																																																																																																																																																																																				
	Conference																								1																										2																																																																																																																																																																																																																																																																																																																																																																																																																																																																																	
	Webinar Course																																																																																																																																																																																																																																																																																																																																																																																																																																																																																																																																			
	Visiting Scientist																																																																																																																																																																																																																																																																																																																																																																																																																																																																																																																																			
	Portfolio of Skills																																																																																																																																																																																																																																																																																																																																																																																																																																																																																																																																			
Management	Coordinator				A		M							A		M									A		M						A		M			A		M					A		M																																																																																																																																																																																																																																																																																																																																																																																																																																																																																					
	SC Meetings	TC	TC	TC	K		TC				2		TC		3					4					5			TC			TC			5		TC			6			TC					E																																																																																																																																																																																																																																																																																																																																																																																																																																																																																					
	SB Meetings				1										2										3									4																	6																																																																																																																																																																																																																																																																																																																																																																																																																																																																																	
	Tool Reports/articles																		M						MT									F																																																																																																																																																																																																																																																																																																																																																																																																																																																																																																		
Dissemination	Scientific community														1									2	D								D	e		3														S																																																																																																																																																																																																																																																																																																																																																																																																																																																																																		
	Industrial community														P									e	D																																																																																																																																																																																																																																																																																																																																																																																																																																																																																																											
	Public engagement													X	P										G										X		e																																																																																																																																																																																																																																																																																																																																																																																																																																																																																															
Exploitation	IPR														P	P									e																																																																																																																																																																																																																																																																																																																																																																																																																																																																																																											
	Entrepreneurship																																																																																																																																																																																																																																																																																																																																																																																																																																																																																																																																			

Appendix 3 – Practical Information



[\[view Google map\]](#)

Venues

This CORE workshop, Mid-term review and BIWIC conference will take place in two venues:

- **Monday 3, Wednesday 5 - Friday 7 September 2018** - will be held at the "Maison de l'Université" situated in the campus of "Mont Saint Aignan" of the University of Rouen. It is located 15 min by bus from the city town (line TEOR T1, "Campus" station, more information here). For the first day (Monday morning), the attendees should buy a bus ticket from the ticket machine at the bus stop.



- **Tuesday 4 September 2018** – hosted by PCAS in their Porcheville R&D site <http://www.pcas.com/Locations/PCAS-Porcheville>. A bus has been arranged to collect and drop off participants in the centre of town. The meeting point is 56 QUAI GASTON BOULET, Rouen (in front of the IBIS hotel) at 8H30.

Using the wireless network as a visitor to Rouen

Maison de l'Université :
Name of the WIFI : CORE-BIWIC-2018
Security key : E4C7ut3l

Transport

Information about travel to Rouen can be found on the [main University of Rouen webpages](#)

Arrival Transport - Getting from the Airport to City Centre

If travelling by plane to Paris consult the following recommendations:

By train from Orly Airport

The train station in Paris that goes to Rouen is "St. Lazare". To get to St. Lazare station, take a bus to "Invalides" and then metro line # 13 directly to the train station. Once at the station, go to the third floor for train departures and arrivals.

By train from Roissy Airport

To get to St. Lazare station, the "Roissybus" will take you close to the "Opéra", rue Scribe, which is a 5 minute walk from St. Lazare station.

From CDG Airport

Take the train B into Paris (about a 30 minutes ride) until "Chatellet".

From Paris Beauvais Airport

You have two options:

Option One: Take the airport shuttle bus to the town center and the SNCF train station. From there, take the metro towards Paris Gare du Nord. After arriving in Paris Gare du Nord, take the RER E towards 'Haussmann Saint Lazare'. From there you follow the direction 'trains grandes lignes, gare SNCF'

Option Two: Take the shuttle bus 'Paris Beauvais'. Once you have arrived at la Porte Maillot you take the metro Line 1 in the direction of 'Château de Vincennes'. You get off at 'Franklin Delano Roosevelt' (4 stops away). You don't leave the metro station but you must change lines to Line 9 in the direction of 'Mairie de Montreuil'. Exit at the station 'Saint Augustin' and follow the directions to the SNCF train station.

Arrival Transport - by train

Direct trains from Paris Saint-Lazare to Rouen central station (1 hr 15).

The Rouen railway station is 20 minutes from the campus.

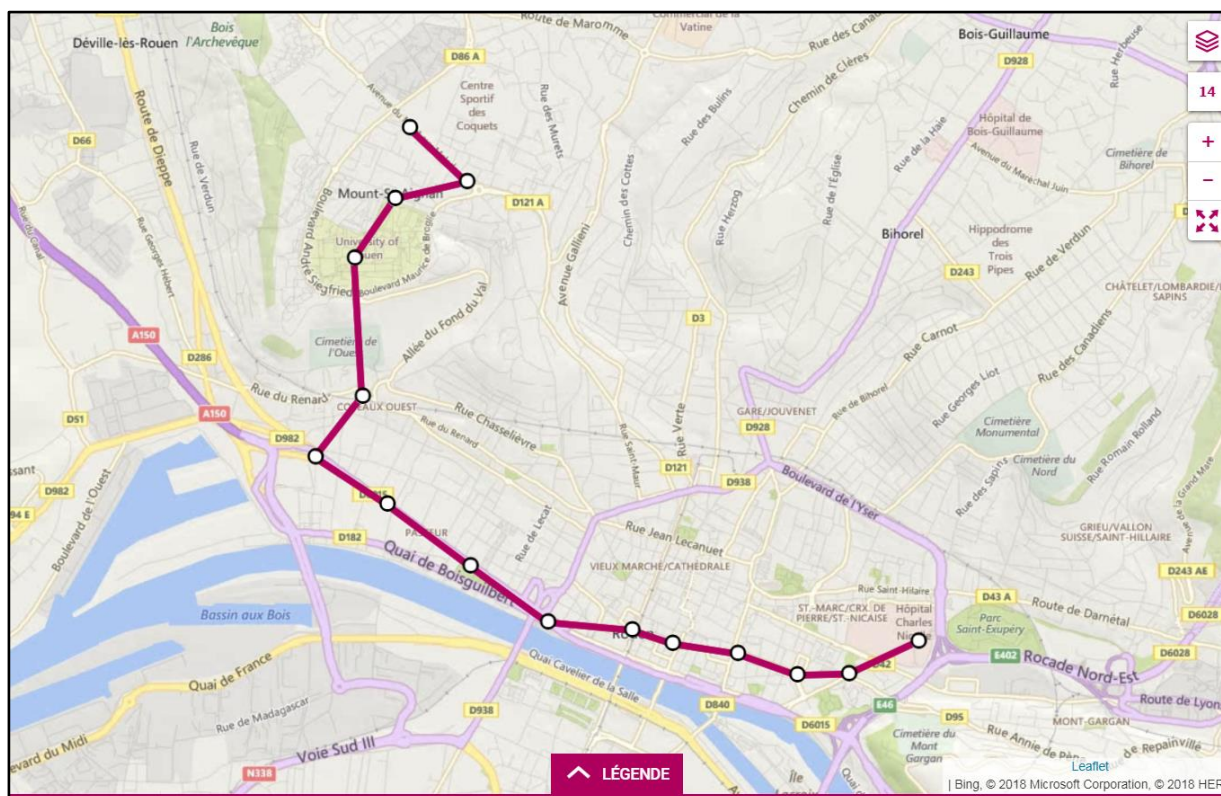
www.voyages-sncf.com

Getting around Rouen

City transportation in Rouen consists of a tram and a bus system. The [tramway](#) branches into two lines out of a tunnel under the city centre. Rouen is also served by TEOR ([Transport Est-Ouest Rouennais](#)) and by buses run in conjunction with the tramway by [TCAR \(Transports en commun de l'agglomération rouennaise\)](#), a subsidiary of [Veolia Transport](#). For the first day (Monday morning), the attendees would have to buy a bus ticket by themselves. They can be easily obtained at the bus stop from a ticket machine.

Getting to the Campus - By TEOR:

Route T1: towards Mont aux Malades MONT-SAINT-AIGNAN. Stop: Place Colbert



<https://reseau-astuce.fr/fr/horaires-de-ligne/6/LineTimeTable/boulingrin-mont-aux-malades/176/boulingrin-rouen/1>

Social Programme

There will be a short Guided Tour of the City of Rouen <http://www.rouentourisme.com/guided-tours-agenda/> on Monday 3 September in the evening at 17:45. Meeting point : Office de Tourisme, 25 Place de la Cathédrale, Rouen (in front of The Cathedral in the town Center). Bus tickets will be provided to travel from Maison de l'Université to the Town Centre.

A network dinner will take place on Tuesday 4 September in the Centre of Rouen - [Le Bistrot D'Arthur](#) 27 rue Cauchoise, 76000 Rouen, Tel: 02 35 70 34 09

Rouen

Rouen (French pronunciation: [ʁwɑ̃]; Frankish: Rodomo; Latin: Rotomagus, Rothomagus) is a city on the River Seine in the north of France. It is the capital of the region of Normandy. Formerly one of the largest and most prosperous cities of medieval Europe, Rouen was the seat of the Exchequer of Normandy during the Middle Ages. It was one of the capitals of the Anglo-Norman dynasties, which ruled both England and large parts of modern France from the 11th to the 15th centuries.

The population of the metropolitan area (in French: agglomération) at the 2011 census was 655,013, with the city proper having an estimated population of 111,557. People from Rouen are known as Rouennais.

Rouen is the capital of the French region Haute-Normandie located in the North West corner of France near the English channel.

Rouen and its suburbs gather more than 650000 inhabitants, that is, the 12th largest urban area of France.

The University of Rouen (now Normandy University) is split over six different sites across the city, gathering around 27000 students in 11 institutes.

Historically, Rouen is famous for being the place where Joan of Arc was judged and burned in 1431.

It is also worldwide known to host the Armada event during which magnificent boats from all over the world gather on the Seine river. The last representation in June 2018 brought together 4 to 6 millions persons from France and abroad during 11 days.

Climate and weather

Temperatures vary between 12 and 20°C and the weather alternates between cloudy and sunny. You can check the forecast <https://www.accuweather.com/en/fr/rouen/133479/weather-forecast/133479>

Electricity

France's electrical current is 230 V -- 50 cycles; sockets take the standard continental European dual round-pronged plugs. A plug adaptor is required for non-European appliances.

Emergency numbers

Ambulance: 15

Fire: 18

Police: 17

Medical services

Citizens of the EU receive free or reduced-cost state-provided health care cover with the European Health Insurance Card (EHIC) for medical treatment that becomes necessary while in UK: <http://ec.europa.eu/social/main.jsp?catId=559>

Telephone

The international access code for France is +33.

Time Zone

France is currently in the Central European Summer Time Zone which is 2 hours ahead of Coordinated Universal Time (+2 UTC).

Tipping

In France, you will always find a service charge on your bill, above the line for TVA (European Value Added Tax). This is included in the advertised prices in bars and restaurants. By law since 2008 the service charge must be passed on to staff and must be in addition to their salary.

In normal restaurants, including cafés, one can leave €1; for every €20. It's not necessary but is appreciated for good service. There are no rules about tipping in France.

Tourist information

Cathédrale - Office de Tourisme

25 Place de la Cathédrale

76000 Rouen

Email: accueil@rouentourisme.com

Tel: 02 32 08 32 40

Opening hours

Monday to Saturday 09:00 to 19:00.

Sunday & holidays from 9:30 to 12:30 and from 14:00 to 18:00

.

Appendix 4 – Rouen Map

You can download this version of the map: http://www.orangesmile.com/common/img_city_maps/rouen-map-0.jpg



Appendix 5 - Contact Details

CORE Network Coordinator:

Prof. Joop H. ter Horst
Industrial Crystallisation
[CMAC Future Manufacturing Research Hub](#)
[Strathclyde Institute of Pharmacy and Biomedical Sciences \(SIPBS\)](#)
Technology and Innovation Centre Level 6
University of Strathclyde
99 George Street, Glasgow G1 1RD, U.K.
Phone: +44 141 548 2858
Email: joop.terhorst@strath.ac.uk

CORE Project Manager:

Claire Scott
[CMAC Future Manufacturing Research Hub](#)
[Strathclyde Institute of Pharmacy and Biomedical Sciences \(SIPBS\)](#)
Technology and Innovation Centre Level 6
University of Strathclyde
99 George Street, Glasgow G1 1RD, UK
Phone: +44 141 444 7198
Email: claire.scott@strath.ac.uk

University of Rouen:

Dr Valérie Dupray
[Laboratoire SMS](#)
Université de Rouen Normandie
Place Emile Blondel
76821 Mont-Saint-Aignan Cedex
France
Tel: +33 2 35 52 24 09
Email: valerie.dupray@univ-rouen.fr

Lucie Dautréaux
[Laboratoire SMS](#)
Université de Rouen Normandie
Place Emile Blondel
76821 Mont Saint Aignan Cedex
France
Tél: +33 2 35 52 29 28
Email: lucie.dautreaux@univ-rouen.fr

CORE Social Platforms



We wish you a pleasant stay in Rouen!

www.coreitn.eu